



Community update

Community Bank · East Ivanhoe

Your local social enterprise

Heidelberg District Community Enterprise Ltd, the franchise partner of the Community Bank East Ivanhoe, has become the first of 207 Community Bank companies across Australia to be certified as a social enterprise. This is a huge milestone for this company, locally own by 440 shareholders – all who invested in the model to provide a revenue stream for local community groups and initiatives.

HDCE Chair Nan Caple said that this move will prompt other Community Bank companies to follow suit and seek certification. “Community Banks have been operating as Social Enterprises since the model was created, with up to 80% of bank profits available to redistribute back to the community”.

Community Bank East Ivanhoe has contributed over \$4 million in contributions since opening the doors 21 years ago.

“The term Social Enterprise summarises our model perfectly and resonates with young people – our future customers, many of whom are seeking ethical businesses to deal with. It is a much easier way to articulate our business structure than the long-winded spiel we have run with for years,” she said.

The milestone was celebrated with shareholders, community group representatives, local councillors, Bendigo Bank guests, and representatives from the Social Traders representative body.



Community Bank East Ivanhoe team members and guests celebrate social enterprise certification at the LaTrobe Golf Club.

Investing in our community

By choosing to bank locally with real people here in East Ivanhoe, you too can ensure that funds continue to go to local groups who need them. Here's a snapshot of some of the great projects and initiatives supported over the past few months.

Big Group Hug's new home

Big Group Hug, provider of material aid to hundreds of families in need, has moved to their new premises in Thomastown. Officially opened by Andrew Giles MP, Federal Member for Scullin, the move will accommodate their storage and volunteer operations. The Community Bank East Ivanhoe has been supporting Big Group Hug since its inception, and this year was no exception – with a cheque for \$45,000 to assist in their rental costs over the next three years.



HDCE Chair Nan Caple presents Big Group Hug's Bernadene Voss with a cheque to support their rental costs.



We joined Big Group Hug's volunteers to officially open their new warehouse.

Celebrating Banyule's women in business

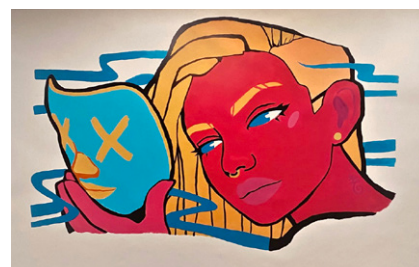
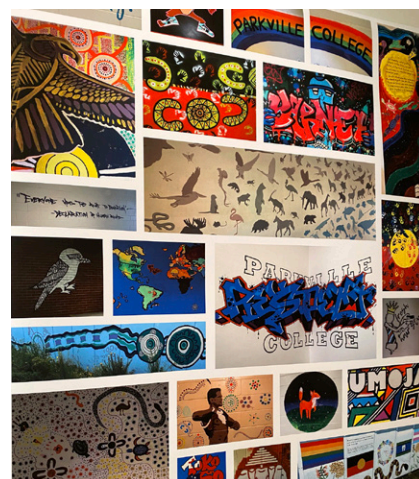
Community Bank East Ivanhoe's long-term sponsorship of the annual Banyule Women in Business Luncheon continued in 2023. Fashion designer and business entrepreneur Lisa Gorman was an excellent choice of inspirational speaker, sharing her journey from nursing to owning one of Australia's most iconic fashion brands.



Customers joined Lisa Gorman at the 2023 Banyule Women in Business lunch.

Youth Foundation Parkville College art

"Our Worlds, Our Words": is an extraordinary exhibition showcasing the creative talent of incarcerated students across the Parkville College campuses. This collection not only celebrates their artistic achievements but also sheds light on the positive impact their artistic practice has had and continues to have on their lives. A huge thank you to the network of supporting banks that enable youth-led change projects for young people in custody.



Artworks were display for 10 days at Melbourne CBD gallery fortyfivedownstairs.

\$4 million reinvested

BANSIC food drive

Throughout the month of June our Branch was a drop-off point for much-needed pantry goods for the BANSIC Food Hub. Sadly, demand has increased for emergency food relief – with more families than ever doing it tough. We were overwhelmed with the generosity of our customers, staff and community members who donated non-perishable foods. The Community Bank East Ivanhoe have continued to support BANSIC financially – with a cheque for \$49,500 to cover their Food Hub operation costs and support for their extensive volunteer program.



HDCE Chair Nan Caple presents a cheque to the team at BANSIC – Kate, Phil and Sharon.



James and Kamna join Tom to deliver donations to the BANSIC Food Hub.

A new oven for the Exodus Community

The Exodus Community in West Heidelberg recently received a grant to purchase and install a new oven for their Community Shed. The Group host a Drop In Meal every Wednesday for around 50 local residents of West Heidelberg who are doing it tough. Not only does the Drop In program provide a healthy home-cooked meal each week, it is a vital social gathering that provides community connections and opportunities for volunteering. The sit down meal enables people from the community to catch up and for a few hours, connect and share their lives, overcoming isolation and finding a place to belong.



The Drop In meal is attended by up to 60 local residents each week.

Summer sponsorships

Community Bank East Ivanhoe continues to provide much-needed sponsorship for many of our local clubs. This summer is no exception, with sponsorships provided to:

- Ivanhoe Bowling Club
- Ivanhoe Park Croquet Club
- Ivanhoe Cricket Club
- East Ivanhoe Bowling Club
- St John's Catholic Tennis Club
- Patchworkers and Quilters Guild of Victoria
- Rosanna Primary School
- Alphington Bowling Club
- Heidelberg Historical Society
- Lower Plenty Cricket Club
- Friends of Eaglemont Village
- Austin Medical Research Foundation
- Fairfield Primary School
- Heidelberg Orchestras
- City of Heidelberg Bowling Club
- 96.5 Inner FM
- Northcote United Cricket Club
- Ivanhoe Netball Club
- Ivanhoe Northcote Canoe Club



2023 Community Grant Program

Do you have an idea or a community project that needs financial support to make it happen?

Community Bank East Ivanhoe is now accepting applications for the 2023 Community Grant program. To learn more contact Carly Kluge by email on carly@conceptmem.com.au or call 0417 592 732.

**APPLY
NOW**



SALT offer for local sporting clubs

Community Bank East Ivanhoe continues to be a Foundation Partner of SALT – Sport and Life Training. This exceptional not-for-profit group provide training to clubs in critical areas of mental health and wellbeing, peer pressure and decision making, team leadership, positive coaching as well as drug and alcohol awareness.

If your club is interested in engaging with SALT contact us as we can provide funding for your first two sessions. Email carly@conceptmem.com.au or learn more at www.sportandlifetraining.com.au



Welcome James

James Clayton is the newest member of the team at Community Bank East Ivanhoe. A true local, James was educated at Marcellin College and is a former Ivanhoe Knights basketballer. He played his football at both Ivanhoe Amateur Football Club and with the Marcellin Old Collegians Football Club – but has since retired.

James married in April and has welcomed a gorgeous Jack Russell puppy into his home! James has come across from the Kew East branch.



A banker that comes to you

Community Bank East Ivanhoe has two mobile bankers that can meet at a time and place that suits you. Syed Zaidi and James Fernandes have 30 years of combined banking experience and enjoy getting out and about to help our customers with their banking. Make your appointment today.

Syed Zaidi

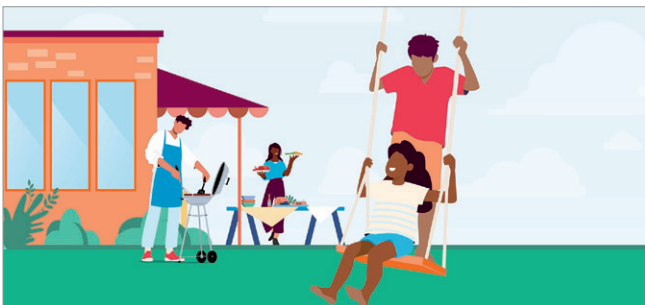
P 0408 768 978

E syed.zaidi@bendigoadelaide.com.au

James Fernandes

P 0435 356 450

E james.fernandes@bendigoadelaide.com.au



Not all banks offer 100% offset on their home loans

We're not all banks.

Our Complete Home Loan offers 100% offset on fixed and variable home loans. Which means you could own your home sooner.

Find out more. Search Bendigo Bank home loans.

East Ivanhoe 9497 5133



Terms and conditions, fees, charges and lending criteria apply. All information including interest rate is subject to change without notice. Full details available on application. Full offset facility is available for Bendigo Complete Home Loan for both fixed and variable loans. Offset facility can only be linked to one loan at any one time. A maximum of 6 offset facilities can be linked per loan account. Linked offset facility must be in same customer name/ number. Credit provided by Bendigo and Adelaide Bank Limited ABN 11 068 049 178 Australian Credit Licence 237879. (1728832-1767000) OUT_32056006, 03/10/2023

Talk to us today



Community Bank • East Ivanhoe

233-235 Lower Heidelberg Road
East Ivanhoe VIC 3079

P (03) 9497 5133

E eastivanhoe@bendigoadelaide.com.au

Branch Manager: Adi Kedia

E adi.kedia@bendigoadelaide.com.au

We're open:

9.30am – 4.00pm Monday to Friday

Heidelberg District Community Enterprise Ltd

233-235 Lower Heidelberg Road
East Ivanhoe VIC 3079
ABN 62 095 312 744

Directors Nan Caple (Chair), Anne Rogan,
Jeremy McAuliffe, Tara O'Brien, Jason Talbot