

Autumn
2021

Newsletter

Community Bank · Mt Eliza

Helping the Mt Eliza community thrive

In mid-April local children were running onto the fields at Emil Madsen Reserve for their first round of junior football in a long time. Opportunities to get together, play sport, catch up with friends and celebrate together have never felt so meaningful.

Our experience through the pandemic has highlighted how important local communities are. We've spoken to many businesses who have been blown away by the support they've had from the Mt Eliza community.

Thriving, healthy communities bounce back from adversity faster and more successfully. People support each other and roll-up their sleeves to lend a hand.

The pandemic is by no means over yet. It's still important to support our local businesses, look out for our neighbours, and take care of our own mental health and wellbeing.

Over the past few months, we've been distributing supportive grants and funds to our local partner organisations. Our aim has been to help them to recover from the disruptions and operational challenges the pandemic has delivered. Our most recent contributions have included:

- \$30,000 in Community Pitch support payments to local organisations (see full story on page 3)
- \$20,000 retail stimulus package which has helped retail traders in Mt Eliza Village
- \$5,000 to the Mt Eliza Neighbourhood House to support their community activities, bringing elderly and isolated members of our community together
- plus many other smaller contributions.

This is core business for Mt Eliza Community Enterprise Limited – the local company that works with Bendigo Bank to operate Community Bank Mt Eliza. Our local board of volunteers are committed to the wellbeing and prosperity of our community and to having a big positive impact. We've reinvested \$300,000 so far.



Above: Herbaceous House and Flowers has been part of the community for over 20 years. Jody and Maddy Abel and their team source fresh flowers daily and support local growers where possible. Find them at 46 Mount Eliza Way or order on 9787 4955. Local delivery available. herbaceousflorist.com.au



It was great to see the Redlegs junior players back on the field in April (photo courtesy of Mt Eliza Junior Football Club).

The more local people choose Bendigo Bank in Mt Eliza, the more impact we can have here.

Bendigo Bank's network of Community Bank branches are owned by local people and operated in partnership with the bank. They return most of their profit to their communities. It's one of the world's largest social enterprise-style businesses. More than \$250 million has been pumped back into Australian communities by the network of branches to-date.

There's plenty of reasons to choose Bendigo Bank. It is one of Australia's largest banks and one of the country's most trusted brands. It's also deeply committed to the prosperity of local communities via Community Bank branches like ours here in Mt Eliza.

If you want to feel good about who you bank with, talk to our Mt Eliza team at 102 Mt Eliza Way, or call 9787 1224 to make an appointment.



We continue to give a local stimulus boost to Mt Eliza retailers

Our customers make this happen

Supporting Mt Eliza's retail traders

Throughout the pandemic we've been helping our local retailers by purchasing shopping vouchers. Our Community Bank Mt Eliza customers have been the lucky recipients of these. But primarily our aim has been to stimulate the local retail economy, encourage people to shop locally and keep money circulating here in our community.

We have injected \$20,000 into the local economy with this initiative to-date.

All of us should keep supporting and choosing our local traders and businesses. As government support initiatives like JobKeeper phase-out, our support of local business will be increasingly important.



From left: Director Alex Godfrey, Richard Wicks from Baden Powell Cricket Club, Rachel Rice from Frankston Dolphins Junior Football Club and Sean Limpens from the Overport Park Redevelopment Foundation.

Overport Park: new facilities opened

Congratulations to everyone at Baden Powell Cricket Club, Frankston Dolphins Football Netball Club and the Overport Park Redevelopment Foundation. In late March they held the foundation members night for their new pavilion facilities. It was a great celebration.

Overport Park looks fantastic at the moment, and the new pavilion has set these clubs up for a very bright future. They'll be able to attract new members, host more local matches and provide a better experience.

Community Bank Mt Eliza – along with many other local supporters – provided some funding.



Daveys Bay Yacht Club had a great summer season of sailing. They hosted a number of events including an inter-schools teams racing competition and the GirlSail event.



We're loving RPP's coverage of VFL football live from Skybus stadium. Tune in on 98.7 or 98.3FM or via their broadcast app and social media.



Bendigo Bank supports SALT – Sport and Life Training. If your sports club would benefit from a SALT workshop, contact us for help to cover the cost of the first session.



Introducing Amey and Julie

We are delighted to welcome Amey Duffy as our new Mobile Relationship Manager.

Amey is a highly experienced home lending specialist. Her mobile service will suit busy people who need Bendigo Bank to come to them. We know that's increasingly important for local people and she's excited to get out on the road. Amey's professionalism, skills and expertise will significantly enhance our local customer service capabilities.

We also welcomed Julie to our branch team back in February. She hit the ground running and is providing exceptional customer service to our customers.



“It's this way of thinking and acting in the customers' best interests that makes me LOVE Bendigo Bank and Fiona Parsons. I am so excited about my new home, which you have made possible. Thank you.”

Christine – Happy customer



Community Pitch 2021 support payments

The Mt Eliza Community Pitch is the annual event by which we distribute our local community grants. The pandemic has impacted our plans for the event recently, but our local board have approved support payments to the tune of \$30,000 to 12 local applicant organisations. Our aim was to assist local organisations in their COVID recovery efforts. The 2021 support payment recipients were:

- Peninsula Home Hospice
- Mt Eliza Netball Club
- Baxter Cricket Club
- Dogs for Kids
- Frankston/Mornington Flyers Swim Club
- Mornington Peninsula Legacy
- Mt Eliza Football Netball Club
- Peninsula Transport Assist
- Baden Powell Cricket Club
- Mornington Life Saving Club
- Peninsula Arts Society
- Mt Eliza Girl Guides

Our
customers
make this
happen

All of these groups make contributions to community health and wellbeing in our area: whether it's bringing us together for sport, providing transport or other valuable community services and activities. We're helping them to find their feet and new operating rhythms after the disruptive lock-downs and many operational challenges. Our local customers have made this happen.

RPP FM: telling our local stories

Our region's Bendigo Bank branches have had a long relationship with community broadcaster RPP FM.

In recent years, the station has moved into new digital broadcasting channels. They are renowned for their coverage of local sport, but have expanded into local news bulletins, coverage of council meetings, local weather and surf reports.

We're proud to support them in telling the stories that are important to our peninsula community. Tune in on 98.7FM (also 98.3FM) or via their broadcast app.

rppfm.com.au



Community Bowls Challenge 2021

We are a proud partner of Mount Eliza Bowling Club and love supporting their annual Community Bowls Challenge. The event brings together local businesses and community groups – and it was extra special this year. Congratulations to the winners, and the club members for hosting such a great 2021 event through February and March.

If you're considering joining a local club, check out the Mount Eliza Bowling Club for great fun, great people and a great community.

mteliza.bowls.com.au

Financial update for local shareholders

Mt Eliza Community Enterprise Limited had a great first half, posting an operating profit of \$103,956 (that figure at the same time last year was \$70,259).

Our Half-Yearly Report (to December 2020) is on our website: bendigobank.com.au/mt-eliza.

We're committed to return most of Community Bank Mt Eliza's profits to our local community and 20% of it to our local shareholders.

Mt Eliza Community Enterprise Limited has around 200 local shareholders who invested capital to get our branch off the ground over ten years ago. The company operates on a Low Volume Market to facilitate the trading of shares.

Local shareholders can contact the Company Secretary Rob Gauci (secretary@mece.com.au) with any queries. We thank our local shareholders for their continued support.



In March we had a visit from Bendigo Bank's state leadership team. They came to inspect our new branch and it was great to welcome them to Mt Eliza.



Bendigo Bank supports AFL South East Women's football and Southern Football Netball League. We're right behind the women's teams and comps in our region.



Our local branch supports Equestrian Victoria and one of their major events, Barastoc Horse of the Year, was held in February. It was a great day of equestrian action.

Big on products. Big on service. And big on local banking

**BANK
LOCAL**

Find out more. Call 9787 1224 or search Bendigo Bank Mt Eliza.

B Bendigo Bank

Community Bank · Mt Eliza

Bendigo and Adelaide Bank Limited ABN 11 068 049 178, AFSL/Australian Credit Licence 237879 A1455027 OUT_2002934, 19/04/2021

Community contacts

Mt Eliza Chamber of Commerce
Trish Stamp 9787 5437
facebook.com/mtelizavillage

Lifeline 13 11 14

Lions Club of Mt Eliza
Neil Wingrave 0428 362 755

Mornington Peninsula Shire
Customer Service 1300 850 600
mornpen.vic.gov.au

Mt Eliza Fire Brigade
Emergency: 000 | Station: 9787 2788
Bush Fire Info Line: 1800 240 667

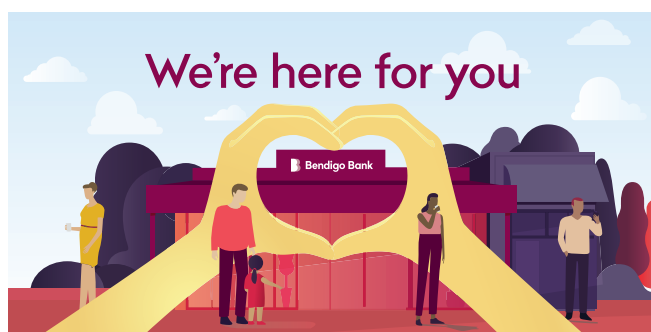
Mt Eliza Men's Shed mountelizamensshed.org

Mt Eliza Neighbourhood House
90–100 Canadian Bay Road, Mt Eliza VIC 3930
9787 8160 | mountelizanh.com.au

Peninsula Transport Assist
9708 8241 | peninsulatransportassist.org

Rotary Club of Mt Eliza rotarymteliza.org.au

Probus Club of Mount Eliza
Tim Acton 0413 501 108 | probusmteliza.club



We're here for you

Talk to us today



Fiona Parsons
Branch Manager
0422 609 068
fiona.parsons@bendigoadelaide.com.au



Andrew Whalen
Customer Relationship Manager
9787 1224
andrew.whalen@bendigoadelaide.com.au



Amey Duffy
Mobile Relationship Manager
0448 450 765
amey.duffy@bendigoadelaide.com.au

Community Bank Mt Eliza

102 Mt Eliza Way, Mt Eliza VIC 3930

P (03) 9787 1224

E mtelizamailbox@bendigoadelaide.com.au

W bendigobank.com.au/mt-eliza

We're open: 9.30am – 5.00pm Monday to Friday

Mt Eliza Community Enterprise Ltd

PO Box 307, Mt Eliza VIC 3930

ABN 18 139 499 326

Directors Reagan Barry (Chairman), James Batty (Deputy Chairman), Robert Gauci (Secretary and Treasurer), Alex Godfrey, Jo Horton, Greg Russo, Matthew Wilson.

B Bendigo Bank

Bendigo and Adelaide Bank Limited, ABN 11 068 049 178
AFSL/Australian Credit Licence 237879. (Fusebox 04/21).