

Spring
2021



Newsletter



Community Bank · Mt Eliza

Thank you to our essential workers

We've been reflecting on Mt Eliza's essential workers who have done such a great job during the pandemic. Whether it's the staff at the cafe, the butcher, the team at the chemist or the supermarket, they've kept calm and carried on to serve us.

Special mentions go to our local doctors, nurses and other healthcare workers for putting themselves on the line to care for the community. Also our local teachers who have done an incredible job keeping our kids engaged and focused during home schooling. Not to mention the couriers who've delivered parcels and tradespeople who've kept building and maintaining things. We're grateful for every one of you.

Why choose Bendigo Bank?

Bendigo Bank's network of Community Bank branches (like ours here in Mt Eliza) are owned by local people and operated in partnership with Bendigo and Adelaide Bank. Community Banks return most of their profit directly to their communities. The more local people choose the Mt Eliza branch, the more impact we can have here.

It's one of the world's largest social enterprise-style businesses. More than \$250 million has been pumped back into Australian communities by the network of branches to date, including \$300K of it here in Mt Eliza.

Bendigo Bank is one of Australia's largest banks and one of the country's most trusted brands. It is committed to the prosperity of local communities via Community Bank branches like ours.

If you want to feel good about who you bank with, talk to our Mt Eliza team at 102 Mt Eliza Way, or call 9787 1224 to make an appointment.

Above: The team at Mt Eliza Village Gourmet Meats have been serving customers and putting smiles on faces throughout the pandemic. Find them at 100 Mount Eliza Way. You can also phone your order through to them on 9708 8330 and arrange a convenient home delivery.



Regional Awards: Mt Eliza shines

At Bendigo Bank's regional awards in early July our Mt Eliza team (pictured above) took out three awards and were recognised by the bank for their outstanding achievements over the past 12 months.

We couldn't be prouder of the team. They've worked hard to make great things happen for our customers and community and have been on deck as essential workers throughout the pandemic.

Our local support strategy

Our local board is committed to pumping funding out to local community groups, clubs, schools and even our local retailers, to support them through the pandemic. Instead of waiting for organisations to apply to us, we're proactively reaching out and funding them to help everyone get through this very challenging year.

Local sponsorship and support: made possible by our customers



Peninsula Transport Assist

We've had a long relationship with this Baxter-based community transport organisation that helps people across the Peninsula and Frankston area get to medical appointments, shopping trips, hospital visits and social events. PTA coordinate a team of volunteers in their own vehicles and have a fleet of mini buses for hire at very reasonable prices.

We recently arranged for one of Bendigo Bank's Community Development Mentors to work directly with PTA to create a marketing plan and new promotional flyers. These will help PTA promote and increase their services, setting them up for a sustainable future.

Peninsula Arts Society Inc.

Creative pursuits have kept many people going through the lockdowns. It's been inspiring to see the members of Peninsula Arts Society share their work on social media. On behalf of our local customers, we're very proud to be able to support the society again this year.

Peninsula Arts Society is a not for profit organisation with around 600 members. The society is run entirely by volunteers and offers classes and self help groups to suit all levels and all mediums.

While their studio has been closed, as soon as restrictions permit they will be back in action with their lessons, demonstrations, workshops and their annual art show. We can't wait to see more of the members' beautiful work.



Mt Eliza Netball Club

Back in July we caught up with some of the team from Mt Eliza Netball Club at Jubilee Park. The club is doing a fantastic job of promoting the health, wellbeing, team building and leadership skills of our local girls. We are delighted to support them.



Mornington Peninsula Legacy

Legacy are committed to ensuring that no widow of a deceased veteran faces life's challenges alone. Here in our region, Legacy support over 950 ageing and vulnerable widows. That's been particularly tough during the pandemic. Our 2021 support payment will help them with this ongoing program. It's all made possible by our Mt Eliza customers. Thank you.



Mornington Obedience Dog Club helps people and their dogs learn new skills and stay healthy, active and engaged. They provide obedience training and events.



We're proud to sponsor the Mt Eliza Farmers' Market which gives Victorian farmers and food producers the chance to sell directly to our community. We can't wait for the market to be back in action soon.



We recently provided support to the volunteers at Angel Lodge Equine Guardians in Somerville who help rescued horses recover from neglect, get fit and healthy and find new homes.



We're still here for you

If you haven't visited the Mt Eliza branch for a while because of the lockdown restrictions, our team send you their regards and hope to see you soon. Don't forget that they are able to meet with you by phone or video call if you need them. Contact the branch on 9787 1224 to make an appointment.

Update for local shareholders

Mt Eliza Community Enterprise Ltd – the local company that operates Community Bank Mt Eliza in partnership with Bendigo Bank – will hold its Annual General Meeting on Tuesday 16 November at 7pm. At this stage, we expect the meeting to be held via Zoom. Please save the date. Shareholders can expect to receive the details of the AGM and the 2021 Annual Report in late October. We thank our local shareholders for your ongoing support.

Neighbourhood House support packages

While its regular activities have been curtailed by the lockdown, The Mount Eliza Neighbourhood House has remained busy supporting and reaching out to elderly and isolated members of our community.

The house recently dispatched care packs which included games, tea and biscuits, knitted goods and other supplies to surprise and delight the recipients. This activity was supported by funding from Mt Eliza Rotary Club and our Community Bank. We thank the team at the Neighbourhood House for the great work they are doing, we're proud to support them.

Mobile banker service

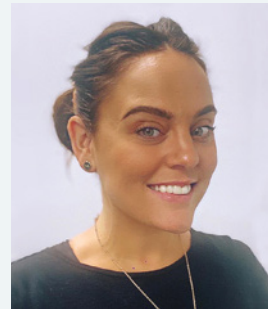
Amey Duffy is our Mobile Relationship Manager. She's a mother of two, has a love for animals and a passion for assisting her customers.

Amey has 15 years of banking industry experience and wants nothing more than to see our customers meet their financial goals.

Whether it is buying a car, purchasing or refinancing a home, starting a business, or investing, Amey is here to take the journey with you. She'll assist you through the complex processes with efficiency and ease.

Life's busy, so Amey can meet you when and where it suits (as restrictions permit), or by phone or video call. Talk to her about how she can help you with your next move and make it a seamless and positive experience.

Amey Duffy – 0448 450 765
amey.duffy@bendigoadelaide.com.au



Meet Amey
your local
mobile
relationship
manager

Bendigo Bank business support

It's a difficult, uncertain time for businesses.

If you need help, Bendigo Bank offers an assistance package that is considered case by case, based on the severity of the impact.

To talk about your situation, or the range of measures available to support your business, contact the team at the Mt Eliza branch on 9787 1224. We're here for you.



In June we provided funding for the 100 Mile Foodie's NDIS social program, bringing people of all abilities together for a night of fun, food and friendship.



We are delighted to be continuing our support of Mount Eliza Bowling Club again this year, including the popular Community Bowls Challenge planned for February 2022.



The village is looking spectacular this Spring as the ornamental pears burst into blossom. We hope you've been enjoying getting out for your daily exercise and are staying fit and well.

Not all banks offer 100% offset on their home loans.

We're not all banks.

Our Complete Home Loan offers 100% offset on fixed and variable home loans. Which means you could own your home sooner.

Find out more. Search Bendigo Bank home loans.

📍 Community Bank · Mt Eliza 9787 1224



Bendigo Bank

Terms and conditions, fees and charges apply. All information including interest rate is subject to change without notice. Full details available on application. Lending criteria apply. Bendigo and Adelaide Bank Limited ABN 11 068 049 178 Australian Credit Licence 237879. (1547274-1571316) OUT_2327541, 31/08/2021

Community contacts

Lifeline 13 11 14

Lions Club of Mt Eliza

Neil Wingrave 0428 362 755

Mornington Obedience Dog Club

morningtonodc.org

Mornington Peninsula Shire

Customer Service 1300 850 600

mornpen.vic.gov.au

Mt Eliza Chamber of Commerce

Trish Stamp 9787 5437

facebook.com/mtelizavillage

Mt Eliza Fire Brigade

Emergency: 000 | Station: 9787 2788

Bush Fire Info Line: 1800 240 667

Mt Eliza Men's Shed mountelizamensshed.org

Mt Eliza Neighbourhood House

90-100 Canadian Bay Road, Mt Eliza VIC 3930

9787 8160 | mountelizanh.com.au

Peninsula Arts Society peninsulaartssociety.org.au

Peninsula Transport Assist

9708 8241 | peninsulatransportassist.org

Probus Club of Mount Eliza probusmteliza.club

Rotary Club of Mt Eliza rotarymteliza.org.au

Support
our local
traders and
shop local

Talk to us today



Fiona Parsons
Branch Manager

0422 609 068

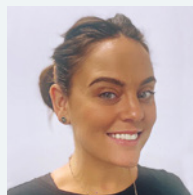
fiona.parsons@bendigoadelaide.com.au



Andrew Whalen
Customer Relationship
Manager

9787 1224

andrew.whalen@bendigoadelaide.com.au



Amey Duffy
Mobile Relationship Manager

0448 450 765

amey.duffy@bendigoadelaide.com.au

Community Bank Mt Eliza

102 Mt Eliza Way, Mt Eliza VIC 3930

P (03) 9787 1224

E mtelizamailbox@bendigoadelaide.com.au

W bendigobank.com.au/mt-eliza

Lockdown hours: 9.30am – 2.00pm Monday to Friday
and by appointment at other times

Mt Eliza Community Enterprise Ltd

PO Box 307, Mt Eliza VIC 3930

ABN 18 139 499 326

Directors Reagan Barry (Chairman), James Batty (Deputy Chairman), Robert Gauci (Secretary and Treasurer), Alex Godfrey, Jo Horton, Greg Russo, Matthew Wilson.

