

Winter  
2023



# Newsletter

Community Bank · Mt Eliza

## Speaking and sharing

Speak & Share is a local not-for-profit mental health charity that encourages the tough personal conversations and challenges the stigma associated with mental health. They facilitate school, corporate and sporting club programs, as well as events.

Mas, Nath and Ben (pictured above) draw on their own personal experiences to positively impact mental health culture here in our community. They have a story to share and are willing to show personal vulnerability and lead the way for others to follow.

Through their unique, humorous approach, they want to normalise speaking and sharing for everybody.

We're proud to support them and look forward to working with them to provide their fun, engaging and powerful sessions to local schools and clubs.

Learn more at [speakandshare.com](http://speakandshare.com)

## Better banking, big impact

Bendigo Bank is one of Australia's largest banks and one of the country's most trusted brands\*. It is committed to the prosperity of local communities via Community Bank branches like ours. Bendigo Bank gives you better banking with a big local impact.

The bank's network of Community Bank branches are owned by local people and operated in partnership with Bendigo and Adelaide Bank. Community Banks return most of their profit directly to their communities through grants and sponsorships.

If you want to feel good about who you bank with, talk to our Mt Eliza team at 102 Mt Eliza Way, or call 9787 1224 to make your appointment.

\* Source: Roy Morgan Risk Monitor 2020



## Supporting Legacy's local social program

Supporting the 700+ widows and families of veterans here in our region keeps Mornington Peninsula Legacy very busy. They organise outings, lunches and gatherings that keep these elderly ladies socially connected and supported. We're proud to help Legacy with some funding for this widows' social program.

Legacy are also celebrating their centenary this year with the Legacy Torch Relay. It began in Pozières, France, just before ANZAC Day. The torch is travelling around the world, stopping at all 45 Legacy Clubs worldwide. It will visit Mt Eliza on 27 September.



Pics courtesy MP Legacy and Defence Health

Top pic: The team from Speak & Share who are doing great work supporting the mental health of people in our community

# Better banking, big impact



Pic courtesy MEFNC

## Redlegs sponsorships

We've been long-term supporters of Mount Eliza Junior Football Club and have extended our support this year to the senior football and netball club as well. The junior club is currently the largest junior AFL football club in the country, with over 800 kids registered to play. Both clubs had a big celebration of sport and community in mid-May when former captain of Melbourne Football Club, Nathan Jones, returned to play for the Redlegs. These clubs do a fantastic job of keeping young local people fit, healthy and connected. We're so proud to support them.

## Community lunches return

Mount Eliza Neighbourhood House is back up and running with its popular community lunches. These lunches bring people together for a low-cost nutritious meal and great company. The next one is on 22 June at the house. Bookings are essential and can be made on 9787 8160.

Learn more at [mountelizanh.com.au](http://mountelizanh.com.au)

## On the road with Peninsula Transport Assist

In 2021-22, Peninsula Transport Assist's 64 volunteer drivers made over 2,000 trips to assist 406 people get to appointments and outings. We know that many people on the peninsula are challenged with transport. This Baxter-based organisation is helping alleviate the problem. If you'd consider volunteering a few hours of your time on a regular basis, learn more at [peninsulatransportassist.org](http://peninsulatransportassist.org)



Pic courtesy WSP

## Women's Spirit Project

The Women's Spirit Project is a volunteer-led initiative which inspires and empowers disadvantaged women to transform their lives. They provide free activities to help women connect and participate in fitness, health and wellbeing activities. One in four Australian women experience mental health issues, family violence and social isolation. Fitness, health and wellbeing activities are a powerful basis for healing. We're proud to support this initiative. Visit [womensspiritproject.org](http://womensspiritproject.org)



## Refinance, renovate or just re-evaluate

With interest rates on the rise, there's never been a better time to review your home loan.

Enquire online at [bendigobank.com.au/healthcheck](http://bendigobank.com.au/healthcheck) or call 9787 1224.

 Community Bank · Mt Eliza

 **Bendigo Bank**

All loans are subject to the bank's normal lending criteria. Fees, charges, terms and conditions apply. Please consider your situation and read the Terms and Conditions, available online at [www.bendigobank.com.au](http://www.bendigobank.com.au) or upon request from any Bendigo Bank branch, before making a decision. Bendigo and Adelaide Bank Limited ABN 11 068 049 178 AFSL 237879 (1676698-1734981) Fusebox 5/2023

# \$480,000 reinvested



## Frankston Dolphins sponsorships

The Frankston Dolphins junior and senior football clubs are off to a great start for the 2023 season. We've extended our support to the junior club's 500+ players and families this year. Meanwhile we've also given the Overport Park Foundation some funding to provide new clubroom furniture. This will improve the facilities for both the junior and senior Dolphins clubs and the Baden Powell Cricket Club who use the venue in the summer months.



## Wellbeing garden at Mt Eliza Secondary

This year we've been working with the secondary college to turn one of their outdoor areas into an Indigenous bush tucker garden and wellbeing space. It's intended to be a peaceful, relaxing place for students to take a break, have outdoor classes, one-on-one conversations and more.

We all know the power of green spaces to help us relax, connect and reduce stress. This space will also give students the opportunity to learn about local Indigenous flora and bush tucker. We can't wait to see it take shape and flourish.

Community banking is based on a 'profit-with-purpose' business model. It means our profits are returned directly to the community that generated them.



Pic courtesy MCSC

## Fresh food program

The aim of Mornington Community Support Centre's fresh food program is to provide people with free, fresh food when they need it, without judgement or recourse.

The program operates in various formats to ensure people have access to bread, fruit, vegetables and other nutritious meals.

In 2022 the support centre distributed over \$130,000 of food, most of which was donated by Coles, Woolworths, Aldi, Torello Farm, Bentons Rise Farm, Bakers Delight, Mornington Village Bakery and individual donors from their vegetable gardens.

The centre's amazing team of volunteers cook, prepare and pack food for hundreds of clients per week. It's an important program which supports some of the most vulnerable people in our community.

Learn more at [www.mcsc.au](http://www.mcsc.au)

## We're proud to support

### Arts, culture and heritage

RPP FM

Mt Eliza Art & Design Show

Peninsula Art Society

### Sport and recreation

Ranelagh Club - KidSail

Daveys Bay Yacht Club junior sailing

Mt Eliza Bowling Club

The Village Baxter Bowls Club

Peninsula Flyers Swim Club

Mornington Life Saving Club

Mt Eliza Cricket Club

Baxter Cricket Club

Baden Powell Cricket Club

Delacombe Park Cricket Club

Baxter Soccer Club

Mornington Soccer Club

Mt Eliza Netball Club

Frankston Dolphins Football Netball Club

Frankston Dolphins Junior Football Club

Overport Park Redevelopment Foundation

Mt Eliza Football Netball Club

Mt Eliza Junior Football Club

Somerville Junior Football Club

Moorooduc Junior Football Club

1st Ranelagh Scout Group

Mt Eliza Girl Guides

Mt Eliza Chamber of Commerce events

### Education

Mt Eliza Secondary College

Derinya Primary School

Walker's Road Preschool

Mornington Peninsula Youth Leadership Camp

Magic Moments student sponsorships

Mornington Peninsula Toastmasters

### Health and wellbeing

Peninsula Home Hospice

Mt Eliza Neighbourhood House

Mt Eliza 55+ Club

Mt Eliza Farmers' Market

Speak & Share

Women's Spirit Project

100 Mile Foodie

### Animal welfare and environment

Mornington Obedience Dog Club

Mt Eliza Woodland Residents Association

### Emergency Service and support

Mt Eliza Fire Brigade/CFA

Mornington Peninsula Legacy

Peninsula Transport Assist

Mornington Community Support Centre

Rotary Mt Eliza community events



Pic courtesy Baxter Soccer Club

## Supporting local soccer

This season we're excited to be supporting the beautiful game with sponsorships of Baxter and Mornington soccer clubs.

At Baxter, the club is proud of its gold member status as a Mental Health First Aid Skilled Workplace and Good Sports Club. This means it is recognised as being an inclusive, supportive and mentally healthy organisation that works hard to support its members and community. We're proud to help the club grow and develop its junior programs.

Mornington Soccer Club was recently awarded the prestigious 5-star National Club Development certification from Football Australia. It's 500+ members play soccer at the highest level of national, state and community leagues and they run a popular MiniRoos competition.

## Community contacts

**Lifeline** 13 11 14

**Lions Club of Mt Eliza**  
Neil Wingrave 0428 362 755

**Mornington Community Support Centre**  
5975 1644 | mcsc.au

**Mornington Obedience Dog Club**  
morningtondc.org

**Mornington Peninsula Shire**  
Customer Service 1300 850 600  
mornpen.vic.gov.au

**Mt Eliza Chamber of Commerce**  
Lynne Heggie 0438 547 007  
facebook.com/mtelizavillage

**Mt Eliza Fire Brigade**  
Emergency: 000 | Station: 9787 2788  
Bush Fire Info Line: 1800 240 667

**Mt Eliza Men's Shed** mouselizamensshed.org

**Mt Eliza Neighbourhood House**  
90-100 Canadian Bay Road, Mt Eliza VIC 3930  
9787 8160 | mouselizanh.com.au

**Peninsula Arts Society** peninsulaartssociety.org.au

**Peninsula Transport Assist**  
9708 8241 | peninsulastransportassist.org

**Probus Club of Mount Eliza** probusmteliza.club

**Rotary Club of Mt Eliza** rotarymteliza.org.au

**Speak & Share** speakandshare.com

Shop local  
and support  
our small  
businesses

## Local news and sport

Tune in to community radio station RPP FM 98.7 for all the local news from across the peninsula. Sports fans will love their live football broadcasts.



## Farmers' market sponsorship

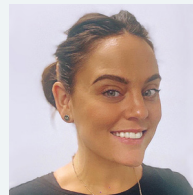
It's been great to see local people continuing to support the Mt Eliza Farmers' Market, with an average of 1,000 people coming through the gates every month. Our market is an accredited Victorian Farmers' Market Association event which brings fresh food and produce direct from Victorian farmers to you. It's on the fourth Sunday of every month. We're supporters of the market and the Chamber of Commerce.



## Talk to us today



Fiona Parsons  
Branch Manager  
**0422 609 068**  
fiona.parsons@  
bendigoadelaide.com.au



Amey Duffy  
Mobile Relationship Manager  
**0448 450 765**  
amey.duffy@  
bendigoadelaide.com.au

### Community Bank Mt Eliza

102 Mt Eliza Way, Mt Eliza VIC 3930  
**P** (03) 9787 1224  
**E** mtelizamailbox@bendigoadelaide.com.au  
**W** bendigobank.com.au/mt-eliza

### Hours:

9:30am – 12:30pm, 1:30pm – 4:00pm Monday to Friday  
and by appointment at other times

### Mt Eliza Community Enterprise Ltd

PO Box 307, Mt Eliza VIC 3930  
ABN 18 139 499 326

**Directors** Reagan Barry (Chairman), James Batty (Deputy Chairman), Robert Gauci (Secretary and Treasurer), Alex Godfrey, Jo Horton, Greg Russo, Matthew Wilson.