

December
2020

Newsletter

Community Bank · Mt Eliza

Welcome to our new branch

While Melbourne was under lockdown, we worked with our partners, Bendigo Bank, to fit-out and open our new look branch. Located at 102 Mount Eliza Way, we are delighted to present this fresh, new space.

As part of its innovation strategy, Bendigo Bank is refreshing the look and feel of branches. They are designed to feel less like a traditional bank, and more like an urban community space with digital screens, free WiFi, flexible layouts, and with our customers and staff at the centre of the experience.

"We've had so many positive comments from customers, and the atmosphere here in the new branch is modern and sophisticated. There's lots of glass, it's open and clean. It's a very modern space for a bank," said Branch Manager Fiona Parsons.

The new branch opened to the public on 20 October – right on Community Bank Mt Eliza's tenth birthday. We haven't been able to host the opening celebration we would have liked to, but we do look forward to welcoming the community to our new space.

There's more exciting things in store for the branch as we liaise with Manyung Gallery to host displays of their fine art from early December.

"The space has been designed for flexibility. We can host a small retail pop-up display, events in the evenings and small group meetings. I think it will be a very vibrant space in the heart of our community," said our Deputy Chairman, James Batty, who managed the fit out and relocation for us.

We still have some finishing touches to add, but we are proud of our new branch and our team that made the re-location happen at such a difficult time.



We invite you to visit our new branch. Our Mt Eliza team are here for you.

We welcome you to drop in and see what the future of banking looks like. And if you're looking for a new bank in the Mount Eliza Village, we would love to have a chat with you.

We've also been liaising with our new neighbours, and the Chamber of Commerce, to develop nearby parklets for extra cafe seating on the footpath and adjacent service road car park spaces. These parklets will really help hospitality businesses get a few extra tables and chairs into play with social distancing requirements during the summer season. We can't wait to see the whole precinct around our new branch come alive with customers enjoying outdoor cafe spaces at Sandbar Cafe, Palamara Village Fruits and Sheep Station Bakehouse.

Melbourne has had a tough few months, and economic conditions will be tough for some time to come. We're committed to helping our customers, community and local small businesses get back on their feet.



Our customers helped make it happen

We're giving a local stimulus boost to Mt Eliza retailers

We're (still) helping Mt Eliza's traders

Over the past few months we've been helping our local retailers by purchasing shopping vouchers. Our local Bendigo Bank customers have been the lucky recipients. Primarily the aim has been to stimulate the local retail economy, encourage people to shop locally, and keep money circulating here in our community.

To date our local board have injected \$10,000 into the Mt Eliza economy with this initiative.

"We've got to help our local businesses have a solid period of trading leading into Christmas," said Reagan Barry from Mt Eliza Community Enterprise Limited. "As the government's stimulus measures phase out, it will be important for all of us to step-up and support our local small business."

We encourage everyone to plan their Christmas shopping around Mt Eliza's retailers and their offerings. We've got some amazing local boutiques, restaurants, cafe and service providers. Let's give them all a hand and keep money here in town where it can do some real good for the community during the recovery.



Take away community lunches at the Neighbourhood House

Community lunches

We've supported Mount Eliza Neighbourhood House's community lunch initiative for many years. The community lunches (which bring older and isolated members of our community together) have taken a COVID twist and moved to take-away meals.

The take-away community lunch is on Wednesdays during school term. Two courses are only \$5.00 for members of the house, and free meals are available for those experiencing hardship. Bookings are essential on 9787 8160.

Thanks to Becca (pictured above) and the team of fantastic volunteers at the Neighbourhood House for cooking and preparing these meals.

mountelizanh.com.au

Men's Shed re-opens

Mount Eliza's temporary Men's Shed has re-opened and the guys have a number of outdoor community projects on the go. If you'd like to join them, call John McCarthy on 0417 506 225 to get involved.

mountelizamensshed.org

Our 2019–20 community impact report

We aim to be the bank of choice for Mt Eliza and a leader in our community. Our local team work hard for community wellbeing and prosperity; because resilient, healthy communities thrive and recover faster.



\$250,000

Reinvested here in the Mt Eliza community to-date



\$32,382

Reinvested here in the Mt Eliza community in 2019–20



17

Local projects and organisations funded in 2019–20



5c

Per share dividend paid to our local shareholders

2019–20 Community Pitch recipients: Mt Eliza Neighbourhood House • Mt Eliza Girl Guides • Peninsula Home Hospice • Mt Eliza Football–Netball Club • Mt Eliza Soccer Club • Dogs for Kids with Disabilities • Baxter Cricket Club • Overport Park Development Foundation • Mornington Peninsula Legacy Club



Great to see people back at the Farmers' Market in November

Mt Eliza Farmers' Market: back in action

We missed the market during the lockdown, and were delighted to see it back in action on Sunday 22 November. At the monthly market you'll find Victoria's best regional produce and can directly support farmers and stallholders with your purchases. There will be a December market on Sunday 27 December (9am–1pm). We're proud to support it.

mtelizafarmersmarket.com.au

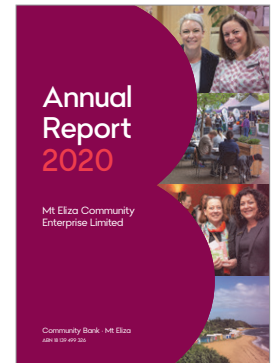
MECE Annual Report 2020

Mt Eliza Community Enterprise Limited's 2020 Annual Report was published in October and we held our virtual AGM in November.

The company finished the year strongly, with a profit after tax of \$254,156 (\$183,170 excluding government's pandemic cash flow boost). We reported a positive cash movement of \$256,140. At 30 June we had cash reserves of in excess of current liabilities of \$601,594. Our equity position is now greater than issued capital for the first time.

We've declared a fully franked dividend of 5-cents per share to be paid to our local shareholders in December. We are delighted to be in a position to pay this dividend for the third year running especially in the current climate when many companies are re-assessing their dividend policies.

bendigobank.com.au/mt-eliza



Help take good care of our beautiful local beaches this summer. Bring your rubbish home with you.



Dogs for Kids 2021 calendar. Call into Community Bank Mt Eliza for a copy, or purchase at: dogsforkids.org.au



Get your kids involved in Nippers at Mornington Life Saving Club this summer, for info visit: morningtonlsc.com.au

Our local customers made this impact possible

If you're a customer of the Mt Eliza Community Bank your banking has had a big local impact. We can't do great things unless local people choose Bendigo Bank here in Mt Eliza. So why not join us?



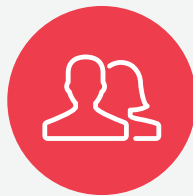
8

Regional projects and organisations funded in 2019–20



2,574

Local Mt Eliza customers at 30 June 2020



8

Volunteer directors working for Mt Eliza

\$250 million milestone

At 30 June 2020 the total contributions made by Community Bank branches to their local communities around the country hit \$250 million. Bendigo Bank feeds **into the prosperity** of Australian communities, not off it.

Organisations we supported with our regional Community Bank partners in 2019–20: AFL South East Women's Football League • Bendigo Bank Youth Leadership Camp • Mornington Peninsula Cricket Association • Mornington Peninsula Schools Enviro Week • RPP FM • Sport and Life Training (SALT) • Peninsula Transport Assist • GriefLine

Mt Eliza Community Pitch update

The Mt Eliza Community Pitch is the annual event by which we distribute our local grants. We invite other local businesses to join us for the event, to contribute their own funds and distribute them on the night as well.

The Mt Eliza Community Pitch is usually held in winter, but the pandemic impacted our plans this year. Our local board have decided to move the event to March 2021 (pending a confirmation closer to the date).

As soon as the event date can be confirmed and locked into place, we'll advise local not for profit groups and call for applications.

Local groups can prepare and submit an application in advance. Forms are available on our website or in-branch.

bendigobank.com.au/mt-eliza



Community contacts

Mt Eliza Chamber of Commerce

Trish Stamp 9787 5437
facebook.com/mtelizavillage

Lifeline 13 11 14

Lions Club of Mt Eliza

Neil Wingrave 0428 362 755

Mornington Peninsula Shire

Customer Service 1300 850 600
mornpen.vic.gov.au

Mt Eliza Fire Brigade

Emergency: 000 | Station: 9787 2788
Bush Fire Info Line: 1800 240 667

Mt Eliza Men's Shed mountelizamensshed.org

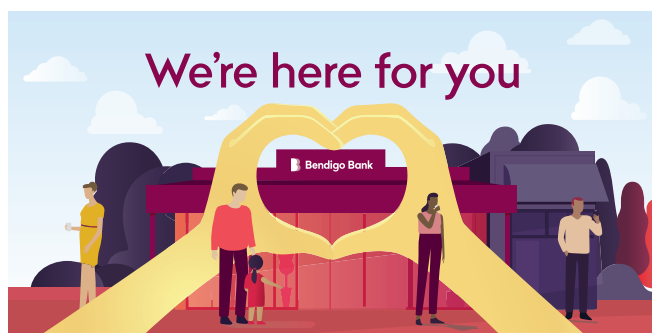
Mt Eliza Neighbourhood House

90-100 Canadian Bay Road, Mt Eliza VIC 3930
9787 8160 | mountelizanh.com.au

Peninsula Transport Assist

9708 8241 | peninsulatransportassist.org

Rotary Club of Mt Eliza rotarymteliza.org.au



Talk to us today



Fiona Parsons
Branch Manager
0422 609 068
fiona.parsons@bendigoadelaide.com.au



Louise Marshall
Customer Relationship Manager
9787 1224
louise.marshall@bendigoadelaide.com.au



Andrew Whalen
Customer Relationship Manager
9787 1224
andrew.whalen@bendigoadelaide.com.au

Community Bank Mt Eliza

102 Mt Eliza Way, Mt Eliza VIC 3930
P (03) 9787 1224
E mtelizamailbox@bendigoadelaide.com.au
W bendigobank.com.au/mt-eliza

We're open:

9.30am – 5.00pm Monday to Friday

Mt Eliza Community Enterprise Ltd

PO Box 307
Mt Eliza VIC 3930
ABN 18 139 499 326

Directors

Reagan Barry (Chairman), James Batty (Deputy Chairman), Robert Gauci (Secretary and Treasurer), Alex Godfrey, Jo Horton, Greg Russo, Matthew Wilson.