

Summer
2021-22

Summer 2021-22

Community Bank · Rye, Dromana, and Rosebud

Dromana Mural

During lockdown, Wina Jie of Vanguard Makers was busy painting a stunning mural on the wall of our Dromana branch. Wina has been delighted to hear from many locals as the painting has emerged, and even included some of those people into the mural. From cyclists to dogs, from fire engine license plates to CFA volunteers, the work of art is a true testament to the locals who make this community great.



For all the new developments, follow us on Facebook or Instagram
#communitybankdromanamural

Sadly, Wina's ladders were stolen from the site one night. But the community leapt into action to help. Some local women who had been chatting to Wina posted the story to a Facebook noticeboard. Sean and Jamie from "SJL Tree and Stump Removal" then generously came to the rescue buying Wina new ladders. The story doesn't end there, as CFA volunteer firefighter Neil heard what had happened and offered his storage shed at the back of his wife's clothes boutique business to store the painting equipment safely.

We are thrilled to part of such an amazing supportive community. Now we can get out and about again, come and have a look at this exciting new piece of community art. See how many community groups you know depicted in the mural that your Community Bank Rye, Dromana and Rosebud have been proud to support over the last 20 years.



New Trailer for Rosebud Sea Scouts

In these times of lockdown it is sadly easy to miss some of the exciting things being achieved in our community. Like this IRB trailer that the Rosebud Sea Scouts were able to purchase with help from Community Banks Rye, Rosebud and Dromana. You can bet there are a group of excited young people just dying to get out of lockdown and make the most of being free on the water! Hang in there everyone.

**Bigger than many.
Better than most.**

As one of Australia's biggest banks, and most trusted brands, Bendigo Bank has everything you need.

Call us on 5985 9755 or search Bendigo Bank near me.

B Bendigo Bank

[^] Roy Morgan Risk Monitor 2020. Bendigo and Adelaide Bank Limited ABN 11 068 049 178, AFSL/Australian Credit Licence 237879 (1415657-1415654)(OUT_7967854)(15/12/2021)

Funds for the community investment grants program are generated through custom

Who do we support?

Community Bank Rye, Dromana and Rosebud are proud to support a wide range of community groups. The Board recognised that during lockdown many local groups struggled to cover costs without the ability to fundraise or charge for ticketed events. The Board continued to support as many groups as possible. It was inspiring to see how many groups were able to adapt and find new ways of connecting even in such challenging times. Below are just a few of the many stories of resilience from 2021.

We supported Poets Corner, who took their live meetings online in 2020 and then used the creative work to publish an anthology. Entitled "A Lighthouse Lost" it is available from local book stores or can be ordered online at www.picklepoetry.com

Another artistic endeavour was the production by Dreamhouse Theatre, "3 O'clock Flagpole." This performance had to be delayed 3 times due to lockdowns, but the resilient teenagers involved, led by the indefatigable Carole Patullo finally managed to go live with the play before the year was out. A tremendous achievement in a difficult year.

Living Culture were unable to provide their Indigenous lessons to schools and kindergartens, or to conduct guide bush tucker walks, meditations or workshops for much of the last 2 years, but have invested time and creativity into producing an informative new website. You can see it www.livingculture.org.au

And the news of the year would not be complete without congratulations to Jeannette Horsley, Team Jimmy and all the people involved in bringing Jimmy's Place to life. We have been proud supporters for many years, and it is wonderful to see all the hard work and dedication come to fruition. Jimmy's Place in Rosebud is a new haven for young people on the Mornington Peninsula, a place where eccentricities are celebrated, teenage challenges are navigated and young people can feel safe and supported. Partnering with YMCA Southern Peninsula Youth Services, Jimmy's Foundation is a registered charitable organisation with a mission to support disadvantage young on the Peninsula.

<https://jimmy's.org.au>



New Mobile Relationship Manager

We are thrilled to announce that Peta Dodson has joined the team as our new Mobile Relationship Manager.

Peta is available to speak to you at a time that suits you. When restrictions allow she can come to you at your home or office to help make your banking convenient.

Contact her at:

Mobile: 0403 126 260 · Email: peta.dodson@bendigoadelaide.com.au

Looking after the vulnerable in lockdown

We have been proud supporters of Southern Peninsula Community Support (SPCS) for many years. In 2021 we provided \$25,000 to help the Southern Peninsula Laundry And Shower Program (SPLaSh)

The program runs on the Rosebud foreshore, offering access to showers, washing machines and dryers with soap, shampoo, towels and laundry powder provided. Food is also provided, and there are toiletry packs and access to other material aid including tents, swags and bedding.

SPCS can help with a range of emergency support, including financial counselling, help with paying utilities and transport costs, some household items and pet food, as well as case management and referrals to further support in the community.

They are currently low on volunteers, so if you have some time or know somebody who does, please get in touch to help continue this valuable work.

For more information on how to donate or volunteer with the organisation, visit: <http://www.spsic.org/>

New Dromana Branch Manger

Name: Laura Nestoriwskyj

Title: Branch Manager

How long you have worked for the bank: 7 Years in October. I started at Frankston and was there for 5 years, then Mornington for 1.5 years

Where you live: Mt Martha currently, about to move to Hastings

Family: Husband & I have two very spoilt doggos (Golden Retriever & Border Collie)

Hobbies or sports: I have played Netball for Mornington since a kid (not currently playing though). I spend a lot of spare time at the beach or camping 😊

A favourite place to go on the Peninsula: We love main street Mornington and always going to cafes down there. As well as the peninsula hot springs or again all the local beaches (love where we live).

What you love most about working for the bank: The family feel to working at the bank, it's a big team environment and a great place to work. I'm a big people person so love being able to see customers every day and get to know them.

Anything else: I just really looking forward to getting out and meeting the local community.

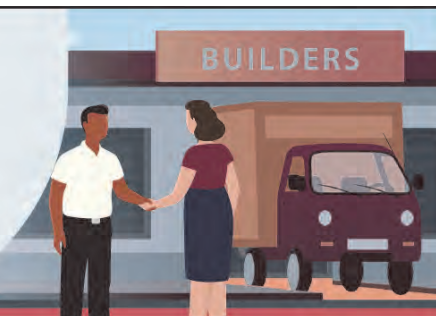
Business banking made personal

If your business banks with one of the big 4, chances are they see you as just another business.

At Bendigo Bank, we see you as a person. As a person wanting banking and financial support for your business.

Find out more. Search Bendigo Business

📍 Community Bank · Rye, Dromana and Rosebud



Bendigo and Adelaide Bank Limited ABN 11 068 049 178, AFSL/Australian Credit Licence 237879 A1419239 OUT_3563430 , 01/10/2021

Talk to us today

Community Bank

Rye

2271 Point Nepean Road

Rye VIC 3941

P 5985 9755

E ryemailbox@bendigoadelaide.com.au

bendigobank.com.au/rye

Community Bank

Dromana

239 Point Nepean Road

Dromana VIC 3936

P 5981 0106

E dromanamailbox@bendigoadelaide.com.au

bendigobank.com.au/dromana

Community Bank

Rosebud

1087 Point Nepean Road, Rosebud

Rosebud VIC 3939

P 5982 0499

E rosebudmailbox@bendigoadelaide.com.au

bendigobank.com.au/rosebud

f /rye.dromana.rosebud.BBL

@ /communitybanksouthernpeninsula/

Directors

Vincent Cheers, Stephen Edmund, Dorothy Mortlock, Amber Earles, Barry Irving, Gary Cain, Janet Hall, Stephen Robin, Craig Dowsing, Renee Bowker

Rye & District Community Financial Services Ltd
ABN 67 095 766 895

Rosebud Business Centre

We are excited to welcome Kristy McRae as our new Business Manager in our Rosebud Business Centre.

This new Business Centre is specifically tailored to meet your business banking needs. Contact Kristy to find out how she can help you and your business.

Phone: 03 5981 0556

Address: 1089 Point Nepean Rd, Rosebud VIC 3939



Bendigo and Adelaide Bank Limited ABN 11 068 049 178, AFSL/Australian Credit Licence 237879 (1427937) (OUT_7973933) (15/12/2021)