

Newsletter

Community Bank · Rye & District, Rosebud and Dromana

We're here for you

Bendigo Bank's Rye, Rosebud and Dromana Community Banks have remained open throughout COVID-19. Our local team are working hard to ensure all hygiene and social distancing requirements are being met, all while continuing to offer friendly and professional customer service. We are so proud of how our staff are performing their roles as essential service workers. Our local Board are committed to supporting community groups, schools, clubs, businesses and our customers as we deal with the pandemic. When you choose to bank with us, you are supporting the incredible work these dedicated community groups are doing.

Delivering over \$138,000 to the community

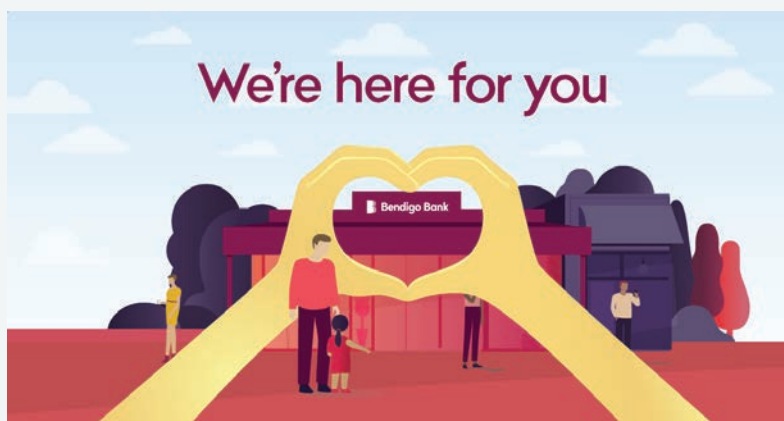
In the first of our two annual sponsorship and grant allocations, Rye, Rosebud and Dromana Community Banks have provided sponsorships and grants to over 50 local community groups to a total of \$138,230. The focus now is to help those who are most vulnerable and directly affected by the impacts of COVID-19.

In this unusual and difficult time, the Board of our Community Banks also recognise that many groups are struggling in extenuating circumstances, with events cancelled or postponed, and sporting seasons uncertain. As all groups play a vital role in contributing to a thriving community, the Board wants to ensure that all groups can continue to function where possible, or to get started again quickly once it is safe to do so.

Chairman Vin Cheers said, "Your Community Bank has always supported local people and the sporting teams, local groups and

businesses that are at the heart of our community. We want to thank you for your support over the years. We know now, more than ever, we need to work together to ensure the community continues to thrive through and beyond this crisis. And as we have always been, we are there for you."

The next round of sponsorship and grant applications opened 1 July 2020. See your branch or website for details.



\$30,000 For Southern Peninsula Community Support Food Relief

Rye, Rosebud and Dromana Bendigo Community Banks have provided a grant of \$30,000 for Southern Peninsula Community Support to assist with their Food Relief program. Southern Peninsula Community Support (you may know them as SPCSIC), are celebrating their 40th anniversary this year. They are committed to helping people across the local region who are experiencing financial difficulties. As the safety net for the Southern Peninsula, the centre catches those who might otherwise fall through the gaps. Their free, confidential and independent support is provided in a welcoming and non-judgmental environment. Their services include emergency relief and crisis support, case management, advocacy and connection to specialist services.

Every year they support thousands of people across the Southern Peninsula, and to do this they rely heavily on community partners, donations and the hard work of volunteers.

CEO Jeremy Maxwell says, "Even though we have been providing essential help to local people here on the Southern Peninsula for decades, there are still many people who don't know who we are or what we do. Tackling these problems requires a whole community effort, so it is really important that we get our message out there and let the community know what we are doing. Hopefully even more people can get involved by dropping off food supplies at a Bendigo Bank branch, volunteering or making a charitable donation. Every little bit counts and together we can help those most vulnerable in our own communities."

The Food Relief program provides fresh fruit and vegetables to be collected from Rosebud Memorial Hall on a Monday morning, or deliveries can be arranged for those who are vulnerable or isolated. With many households being affected by job or income loss, the need to ensure everyone has food on the table has never been greater.

For more information or to volunteer goods or services to the Southern Peninsula Support Centre, please go to: www.spcsic.org/



Welcome new Senior Manager, Fiona Somjee

We are excited to welcome on board our new Senior Manager, Fiona Somjee. Fiona works across the three Community Banks of Rye, Rosebud and Dromana, but is currently predominantly based at the Dromana office.

Fiona is a strong finance professional with a demonstrated history of over 20 years working with in the banking industry. She has worked with in numerous roles with banks in both Australia and Europe, including experience with community banking. Fiona is skilled in credit and risk management, recoveries, retail banking, self-managed superfunds, financial services, mortgage lending and strong team management. Along with these impressive professional credentials, Fiona is an inspiring and engaging Manager, who is great at building strong relationships with clients, customers, and staff. She says that, "Customer focus is my signature dish." With two young boys aged 10 and 12, Fiona does not have a lot of spare time on her hands, but when she does she likes to "zen out with a bit of yoga".

Fiona is keen to get to know her local community members, so give her a call, or when we are able to get out and about again, drop into the branch to say hi. She would love to hear from you and help ensure you are getting the best possible service from your banking.

To contact Fiona call: 0434 730 701 or email: Fiona.Somjee@bendigoadelaide.com.au



Keeping in touch with our communities



In these strange times of lock-down and social distancing, many of us have felt that keeping connected with people in our communities has become unusually difficult. For some, this means real isolation and loneliness. Fortunately, we are lucky enough to have many groups already poised to help us keep connected and share stories. The Board recognise that now, when people are unable to meet and gather as they normally would have, the need for printed communication is greater than ever. We are delighted to maintain support of the following publications.

And of course, we have this newsletter coming now coming to you quarterly, as well as regular updates on our website. We always aim to be there for you, so if you need help or advice, please just reach out. Pick up the phone and give us a call at any of our Community Banks, or if you do need to visit us, know we remain open and are stringently adhering to hygiene requirements to keep you safe.

Rye (03) 5985 9755
Rosebud (03) 5982 0499
Dromana (03) 5981 0106

Rosebud Police Senior Citizens Register (RPSCR) – \$5,000

RPSCR communicates with its entire client base three times a year via four page newsletters. This newsletter is a vital form of communication for many isolated and elderly people. It was introduced in 1995 when the census revealed there were in excess of 10,500 local residents aged over 60. That number has increased significantly since then.

The register aims to make older citizens feel safer, to have contact they need and to eradicate abuse of the elderly, amongst other things. RPSCR is supported by police but run by a dedicated group of volunteers.

For more information visit: www.rosebudseniors.websyte.com.au/

Lions Club “Hill ‘N’ Ridge” Newsletter – \$2,000

Initiated in 2009, the Hill ‘n’ Ridge Community Newsletter provides a voice for local organisations to share their information and activities. It also aims to develop cohesiveness by highlighting various community personalities. Geographically, it focuses on the areas of Red Hill and Main Ridge, but also includes stories and people from neighbouring areas such as Arthur’s Seat, Shoreham and Flinders, with readership even extending as far as the UK!

The Hill ‘n’ Ridge Community Newsletter is but one of the many activities supported by the local Lions Club. Lions are people who get involved in humanitarian efforts locally, nationally, and internationally.

For more information visit: <https://lionsredhill.vic.lions.org.au/projects> or email: lionsnewsletter1@gmail.com

RPP Radio 98.7 FM

Your Community Banks have a long association with RPPFM radio station. As proud sponsors of the Bendigo Bank studio, they partner with the station to keep you up-to-date on all the local news, sports, weather and entertainment. Tune in for John Shore’s “Scrambled Eggs” in the morning on Wednesday and Thursday from 6.00 – 9.00am to hear stories of local personalities, businesses and community groups, or listen on the weekend for live and recorded sports coverage – of course as teams are able to play, and with updates as to how the restrictions are effecting everyone.



Director profile

We are pleased to welcome on Board new Director, Craig Dowsing.

Name: Craig Dowsing

Where do you live? Mornington

When did you join the Board? June 2019

What skills or experience do you bring to the Board? Business Management, Financial Planning and Analysis.

What clubs or groups do you belong to? Junior Basketball Coach.

What is your favoured thing about living on the Peninsula? Being by the water, the beautiful landscapes and the local village and community feel.

What made you want to become a Director of our Community Banks?

Being able to assist the Community Banks in its financial management to provide great outcomes for our customers and the community.

What do you think would surprise people about the Community Bank that they might not know? Giving back to the community comes above all else!





\$8,000 for Boneo CFA vital upgrades

It's been six months since our devastating bush fire season, but we haven't forgotten!

More than \$13 million raised through the Bendigo Bank bushfire appeal has been distributed to provide immediate relief to fire affected families.

Find more stories on how Bendigo Bank is helping to rebuild communities here: <https://bit.ly/2Mu72Mi>

Locally, Rye, Rosebud and Dromana Community Banks are also making a difference. In this latest round of sponsorships and grants, Boneo Fire brigade was awarded \$8,000. Boneo Fire Brigade has been serving the community, not just Boneo, but the whole of Victoria and beyond since 1942. As a volunteer group, they would not be able to continue to provide this service without the generous support from the public and local organisations.

The brigade currently has three appliances:

- Tanker 1 is a CFA owned fire truck, carrying 3,000 litres of water along with more tools and equipment than most people have in their garage
- Tanker 2 is a brigade owned and funded fire truck. It carries 1,300 litres of water and a small number of tools, such as a chainsaw, a few hand tools and of course hose and nozzles
- The FCV (Forward Command Vehicle) is a twin cab ute. This vehicle can be used as a command post at fires and car accidents or to transport additional crew and equipment when required. It is fitted with a message board to warn oncoming traffic of hazards. It is also used to tow our community engagement and educational trailer to events like the Boneo Market, Bunnings Days or Boneo Park.

Tanker 2, Boneo FCV and the trailer, along with all the equipment on them, have all been purchased with the help and sponsorship from the Bendigo Bank. Boneo CFA are now looking at building a new motor room on the station, to better house their fire-fighting vehicles and make the station a safer place for their completely volunteer work force. Planning is well underway and with ongoing support from Bendigo Bank and the community, they hope to see this station addition in the not too distant future.

The Brigade members shared, "We would like to thank the team at Bendigo Bank for their support over many years. It has helped us immensely to create a safer work-place for our volunteers and protect the lives and property in our community."

If you are interested in volunteering with Boneo Fire Brigade please email: secretary@boneocfa.org.au

Talk to us today

Community Bank

Rye & District

2271 Point Nepean Road, Rye VIC 3941

P 03 5985 9755

E rye@bendigoadelaide.com.au

bendigobank.com.au/rye

Rosebud

1087 Point Nepean Road, Rosebud VIC 3939

P 03 5982 0499

E rosebud@bendigoadelaide.com.au

bendigobank.com.au/rosebud

Dromana

239 Point Nepean Dromana VIC 3936

P 03 5981 0106

E dromana@bendigoadelaide.com.au

bendigobank.com.au/dromana

 [/rye.dromana.rosebud.BBL](https://www.facebook.com/rye.dromana.rosebud.BBL)

We're open:

9.30am - 5.00pm Monday to Friday

Directors

Vincent Cheers, Stephen Edmund, Anthony Harford, Dorothy Mortlock, Amber Earles, Barry Irving, Gary Cain, Janet Hall, Stephen Robin, Craig Dowsing, Renee Bowker

Rye and District Community Financial Services Ltd
PO Box 441, Dromana VIC 3936

ABN 67 095 766 895