



## Rural Bank Fridays.

On Friday 17 March 2017, the Willaura/Lake Bolac **Community Bank**<sup>®</sup> Branch held its very first Rural Bank Friday. We had a BBQ lunch at each branch, Willaura Lions Club cooked up a big BBQ for the Willaura **Community Bank**<sup>®</sup> Branch and some of the **Community Bank**<sup>®</sup> company's Board members, including our Rural Bank Specialists, cooked up a feast for the Lake Bolac **Community Bank**<sup>®</sup> Branch. Rural Bank representatives Ewan Tope, Tania Currie and our newly appointed Senior Agribusiness Relationship Manager Luke Riley attended the event and were available for agribusiness advice and a general chat to customers. We also held a 'Support Local, Bank Local' colouring competition for the Lake Bolac College and the Willaura Primary School students. The children were very creative in their artwork making the judge's decision very difficult. The school children also attended the Rural Bank Friday where they enjoyed a BBQ lunch, presentation to the winners of the colouring competition and a surprise visit from Piggy. Thank you to all that came out to support our first Rural Bank Friday.



Students from the Lake Bolac College enjoying the BBQ and a visit from Piggy at the Rural Bank Friday afternoon.



Pictured enjoying the morning and having a chat are Scott Price, Ewan Tope Rural Bank Agribusiness Relationship Manager, John Higgins and CSO Jo Byron.



Pictured cooking up a storm are Willaura Lions Club members Ellen and Mike.



Riley, Maeve and Archie from Willaura Primary School with Piggy.

Willaura/Lake Bolac Financial Services Limited 70 Main Street, Willaura VIC 3379 **ABN** 83 108 159 422

**Directors:** Colin McKenzie (Chairman), Lyn Webster (Secretary), Davina Stacy (Treasurer), Andrea Armytage, Jane Blackburn, David Hucker, Rowley Paterson, Colleen White and Lisa Wills.

## 10 years of service for Jo.



Congratulations and thank you to Jo Bryon who recently celebrated the career milestone of 10 years of service with our bank.



Pictured is Jo receiving her award for 10 years of service.

## Farewell Carol.

After three years of working for Willaura/Lake Bolac **Community Bank**<sup>®</sup> Branch we say farewell to Carol McInnes. We wish her all the best in her retirement and thank her for contribution to the **Community Bank**<sup>®</sup> branch.

## Welcome to our new Customer Relationship Manager.

Maree Michell is settling into her new role with gusto! Her warm and welcoming attitude is being well received in the local community. Maree joins us with almost 40 years of finance and banking experience in Agribusiness, Commercial, Business Banking and Retail. For the last four years, Maree has worked at Rural Finance in Ballarat as an Agribusiness Relationship Assistant. She has mainly worked in the Ballarat region, with some time in Brisbane, Queensland. Growing up in Napoleons, south of Ballarat. Maree began her banking career as a teller in 1976. She lives in Ballarat; and has two children Matthew and Belinda and three grandchildren, Layla, Emmie and Alfie. In her spare time, Maree enjoys travelling, gardening and minding the grandchildren. If you haven't met Maree yet please feel free to come into the branch and say hello. Maree is looking forward to meeting and working with you all to gain a successful and collaborative partnership. Maree can also be contacted on 0409 846 980 or email [maree.michell@bendigoadelaide.com.au](mailto:maree.michell@bendigoadelaide.com.au)



## \$19,924 donated to community groups.

### Community Enterprise Foundation™ Grant Program 2017 – Banking locally benefits the local community.

Thank you to all the community groups who submitted applications to the Community Grants Program. A total of \$19,924 has been distributed to the following successful groups:

Lake Bolac Music Club – Annual Production	\$1,000
Lake Bolac Eel Festival – 2018 Eel Festival	\$3,000
Lake Bolac College – BMX Track	\$3,000
Lake Bolac Foreshore Committee – Fire Pits	\$2,500
Willaura Hospital Auxiliary – Furniture	\$5,000
Willaura Recreation Reserve – Revamp Wet Areas	\$1,924
Willaura & District Community Development Group Inc – Big Night Out	\$1,000
Willaura Primary School – Willaura Lights Up	\$2,500

## Catch the savings bug Bendigo Student Banking

Whether it's for the latest craze in computer games, for a new bike or just for a rainy day, we all know it's never too early for our kids to start learning about budgeting and saving.

That's why at Bendigo Bank we've introduced our Student Banking Program and Bendigo PiggySaver Account – perfect for primary school aged savers.

Drop into your nearest branch at 70 Main Street, Willaura - 5354 1170 or 2110 Glenelg Highway, Lake Bolac - 5350 2374.

Bendigo and Adelaide Bank Limited. ABN 11 068 049 178 AFSL 237879. SCH20 (361255\_v1) (20/06/2017)



**Bendigo Bank**  
banking



## Easter Egg Competition.

This year we ran an Easter Egg Guessing Competition which proved very popular with our customers trying to guess the correct amount of Easter Eggs in the jar without going over. The lucky winners were Philip Brain at Willaura and Lorraine Deutsch from Lake Bolac. The number of eggs in the jar was 77.



Pictured collecting their yummy prizes from CSO Lauren are Philip and Lorraine.



Easter Egg Completion Lake Bolac Lorraine Deutsch.

## Willaura Harvest Cut Out 2017.

The 2017 Willaura Harvest Cut Out was once again successful, and the community enjoyed the opportunity to come together to catch up after what was an excellent season. The meal provided by the Willaura Kindergarten Parents Committee and East Grampians Health Service was delicious, and the Swimming Pool Committee handled the bar well. Fun was had on the Jumping Castle and the Super 8 Car simulator, and the children kept the operators busy all evening. Back by popular demand The Greater Hamilton Archery Club members were on hand once again with their equipment and expertise, and allowed the community the opportunity to have a go at a sport they generally have little access to. EGHS staff ran an entertaining and informative competition about people, places and organizations around Willaura, and this created a good deal of interest for all. Winners of the competition were Hannah Jenkinson and Max Pedersen. Winners of the Landmark Raffle were Val Albert and Sophia Coad. A number of local and Ararat businesses including the Willaura/Lake Bolac **Community Bank**<sup>®</sup> Branch contributed significantly with funding and the organisers said they were most grateful to them for their support.



Pictured Val Albert and Fraser Heard putting their thinking caps on for the EGHS competition.



Pictured enjoying the Cut Out are local residents Emily, Nick and Annabel.

## Community Bank<sup>®</sup> Branch donations.

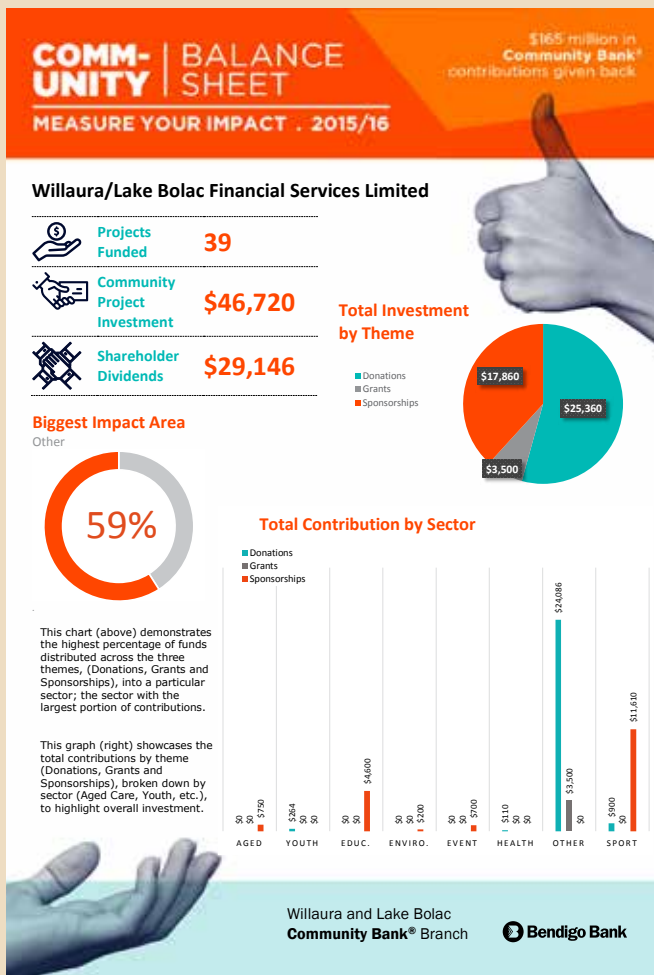
Willaura/Lake Bolac **Community Bank**<sup>®</sup> Branch was pleased to provide a donation of \$60 to the Lake Bolac & District Bowling Club Ladies for their 3 Bowl Pairs Competition. Winners were Nancy Baker and Christina Gale, Runners Up were Elaine Hanrahan and Mary-Anne Otto. We were also pleased to have provided \$300 to the Mininera & District Tennis Association for Junior Tennis Trophies.

## Welcome to our new casual Customer Service Officer staff member.



Next time you visit one of the branches you may notice a new face to our team.

Suzanne Neumann started with the Willaura/Lake Bolac **Community Bank**<sup>®</sup> Branch team in June and she is currently in the midst of her teller training. We appreciate your patience while she settles into her new role.




## Monthly weather updates from Jane Bunn.

Rural Bank is pleased to partner with renowned Channel 7 meteorologist, Jane Bunn, to provide monthly weather updates for each state of Australia. Using her extensive meteorological knowledge and local insight from Rural Bank's team in the field, Jane delivers a summary of seasonal conditions across the agricultural regions of each state. A number of Willaura/Lake Bolac **Community Bank®** Branch clients enjoyed a presentation from Jane at a recent luncheon at the Dunkeld Community Centre hosted by Rural Bank and Rural Finance. Jane provided her audience with plenty of details about weather patterns and the factors that determine them. The good news is it doesn't look as bad as it did leading into 2006, but we probably won't see a repeat of 2006 either.

To receive future weather updates direct to your email, subscribe to Rural Bank Insights.

Ag Answers is a specialist insights division of Rural Bank that provides:

- Research and analysis into commodities,
- Farmland values,
- Farm business performance and
- Topical agricultural issues to support farmers in making good business decisions on the farm.




## Our new Farm Management Deposit Offset Account works in your best interest.

Just as seasons and prices fluctuate, so does farm income. To better manage risk and strengthen your financial future, our new FMD Offset Account gives you more options to manage your farm finances.

This means you can now use your FMD balance to offset a farm term loan, which may reduce your interest costs.

**To find out more visit your local branch at Willaura/Lake Bolac Community Bank® branches at 70 Main Street, Willaura or phone 5354 1170, or 2110 Glenelg Highway, Lake Bolac or phone 5350 2374 to speak to Maree Michell.**

Bendigo and Adelaide Bank Limited, The Bendigo Centre, Bendigo, VIC 3550. ABN 11 068 049 178 AFSL 237879. Product issued by Rural Bank Limited, ABN 74 083 938 416 AFSL 238042 and distributed by Bendigo Bank. For deposit products Bendigo and Adelaide Bank Limited may receive a commission based on the average account balance. Before applying for a Rural Bank FMD Offset Account you should consider your situation and consult your taxation adviser to ensure you meet legislative requirements, understand your obligation to comply and the applicable penalties for non-compliance and wider taxation implications. Lending criteria, terms, conditions, fees, charges and eligibility criteria apply and are available on application by phoning our Customer Service Centre on 1300 660 115, online at ruralbank.com.au or by visiting your local branch. S56564\_3 (360318\_v2) (8/06/2017)



Available through **Bendigo Bank**

## Willaura/Lake Bolac Community Bank® Branch

### Willaura

70 Main Street, Willaura VIC 3379

Phone: 5354 1170

Website: [www.bendigobank.com.au/willaura](http://www.bendigobank.com.au/willaura)

Opening hours: Tuesday and Thursday 11.00am – 4.00pm, Friday 9.00am – 12 noon

[facebook.com/bendigobank](https://facebook.com/bendigobank) [twitter.com/bendigobank](https://twitter.com/bendigobank)

### Lake Bolac

2110 Glenelg Highway, Lake Bolac VIC 3351

Phone: 5350 2374

Website: [www.bendigobank.com.au/lake-bolac](http://www.bendigobank.com.au/lake-bolac)

Opening hours: Monday and Wednesday 11.00am – 4.00pm, Friday 2.00pm – 5.00pm



[www.bendigobank.com.au](http://www.bendigobank.com.au)

